



GPG BUDGET

PUBLISHED BY GAUTENG PROVINCIAL GOVERNMENT

MARCH 2015

GAUTENG PROVINCIAL BUDGET 2015



GAUTENG MEC FOR FINANCE, BARBARA CREECY TABLED THE PROVINCIAL BUDGET ON 3 MARCH 2015.

Gauteng contributes 36% to the country's Gross Domestic Product and it remains the economic and industrial hub of South Africa and is the sixth largest economy on the African continent. In terms of the 2014 Mid-year population estimates, Gauteng continues to be the largest province in the country with 12.9 million people. Therefore, the continuing migration to the province continues to exert pressure on infrastructure and social services.

The province adopted a Ten-Pillar Programme which aims to radically transform, modernize and re-industrialize Gauteng

over a period. The medium term budget has been aligned with the Ten-Pillar Programme through the allocation of funds towards projects and programmes that will contribute to the improved lives of Gauteng citizens.

The significant portion of the provincial budget, that is 78%, is allocated to Education, Health and Social Development in 2015/16. This demonstrates our commitment to radical social transformation and modernization of public services. Infrastructure delivery programmes receive over R12 billion in 2015/16 to contribute to job creation and to stimulate economic growth through projects such as Tshepo 500 000,

Syferfontein, Savannah City, and Expanded Public Works Programme.

Investment in the Township Economy is one key priority that is aimed at supporting the development of township enterprises, cooperatives and SMMEs that produce goods and services that benefits township residents. Funding set aside for this project amounts to R140 million in 2015/16.

We trust this budget summary will improve your understanding of the Gauteng Provincial Budget for the 2015 MTEF.



**To access the full
2015 Gauteng Budget
Speech and the
Gauteng Budget, please
visit us at:**
www.treasury.gpg.gov.za

Access to Information

Please call us if you have any information on fraud and corruption in the Gauteng Provincial Government.

Fraud and Corruption toll free Number:
0800 701 701

Visit our website at: www.gautengonline.gov.za

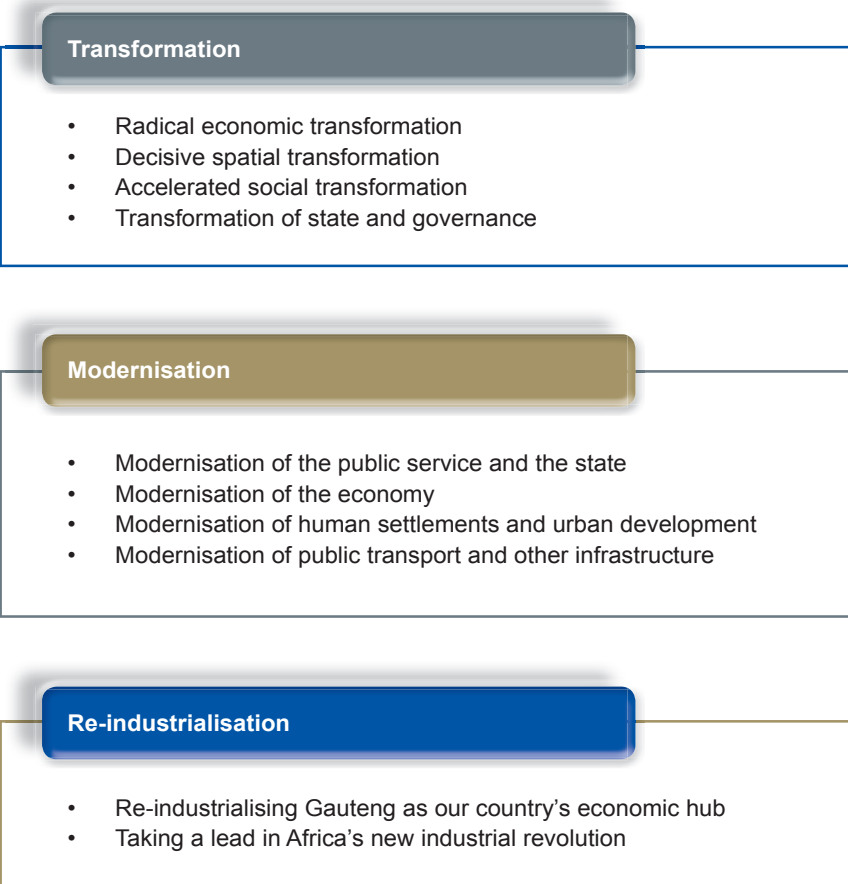
Comments on the budget are welcome and can be forwarded to:
Head of Department
Gauteng Provincial Treasury
Private Bag X12
Marshalltown
2107

Telephone no:
(+27) 11 689 6000

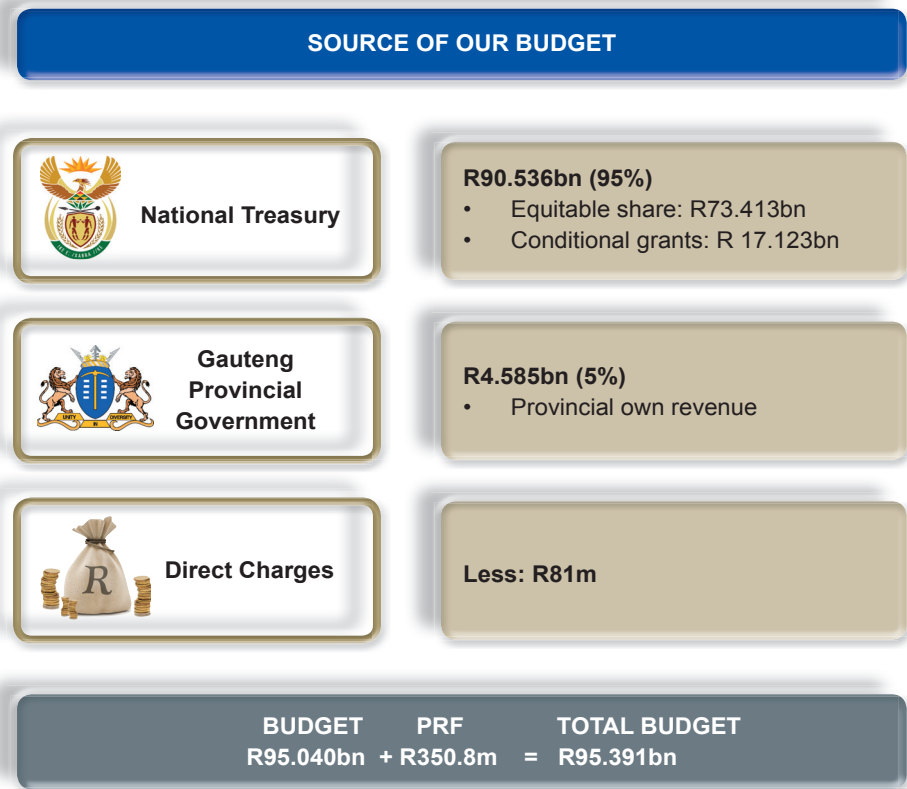


Gauteng's ten pillar programme

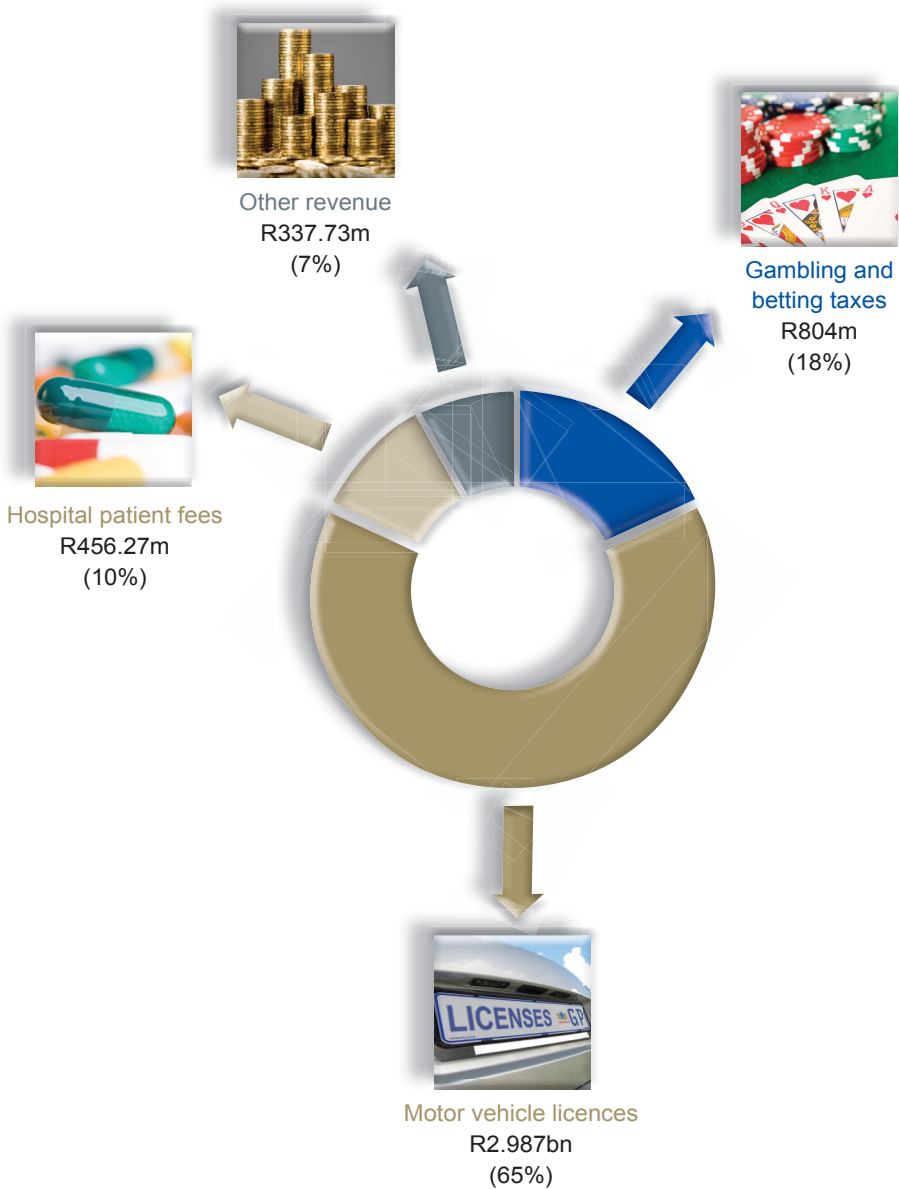
The Gauteng Provincial Government adopted a ten-pillar programme of radical transformation, modernisation and re-industrialisation of Gauteng over the next five to fifteen years. The 2015/16 MTEF is therefore aligned to these pillars as indicated below:



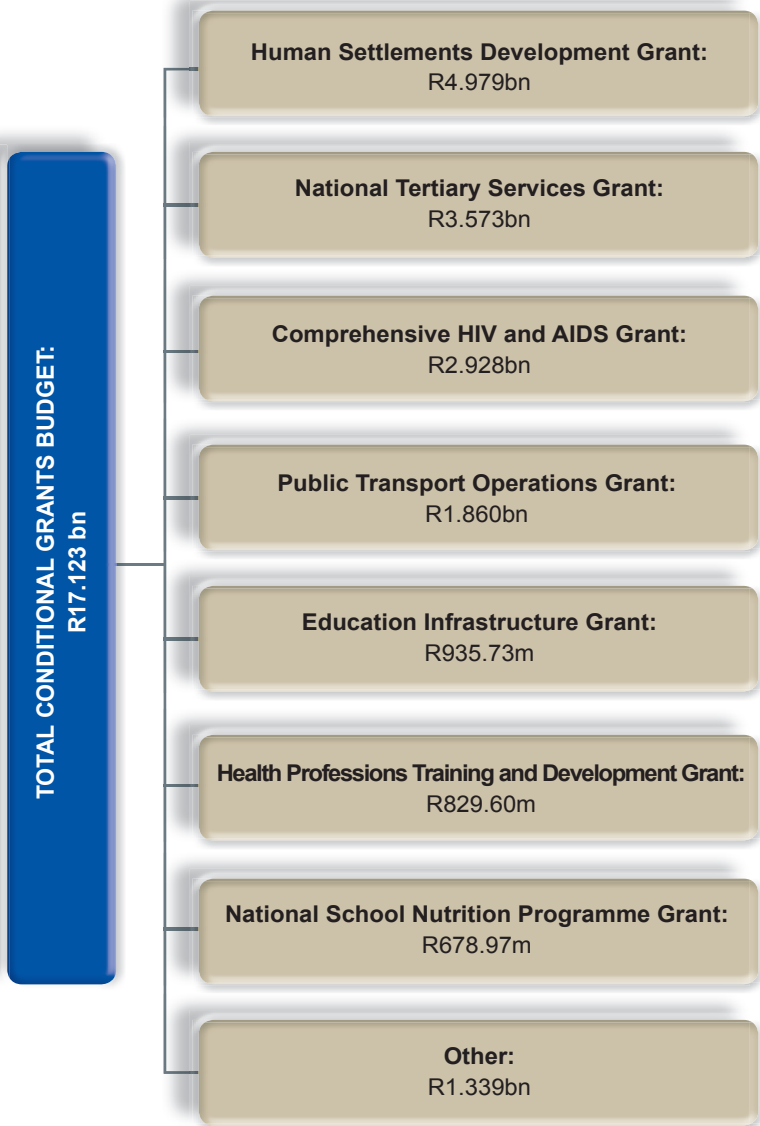
Source of our Budget



Our Revenue 2015/16

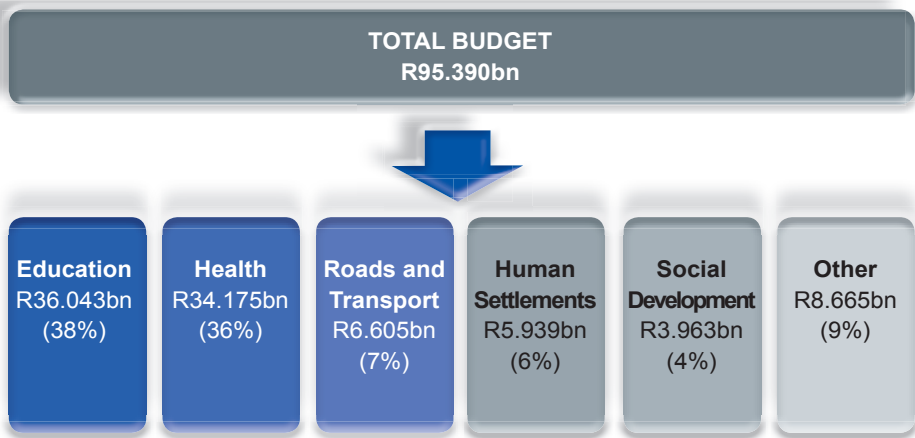


Conditional Grants

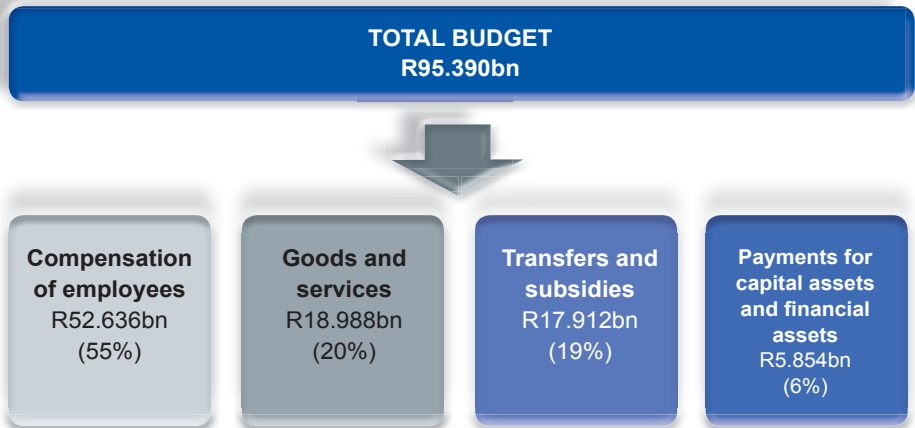


Provincial Spending

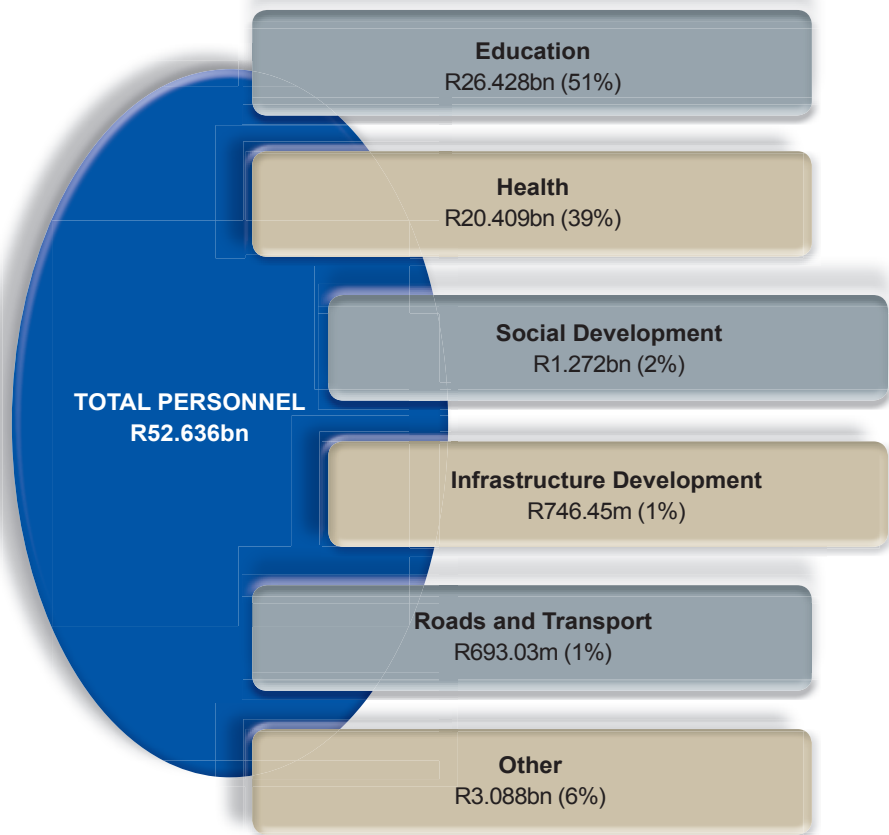
Function



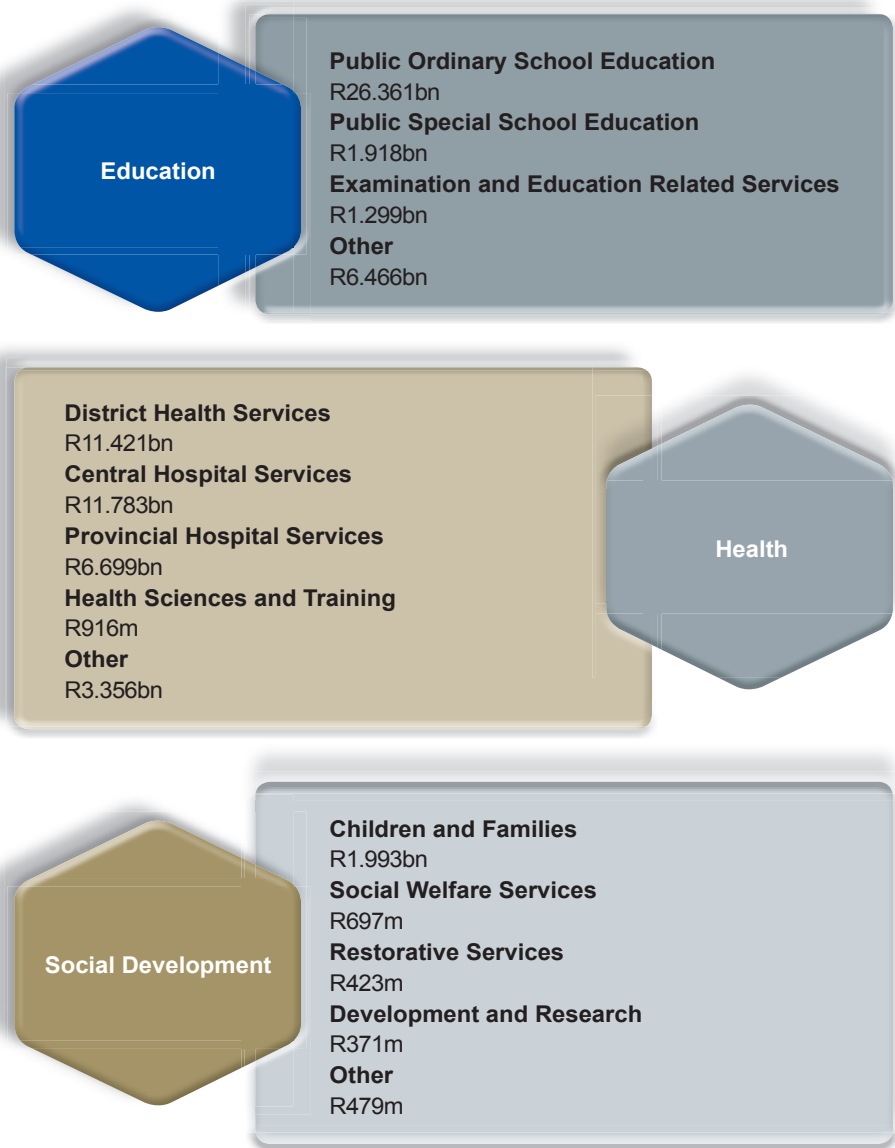
Economic Classification



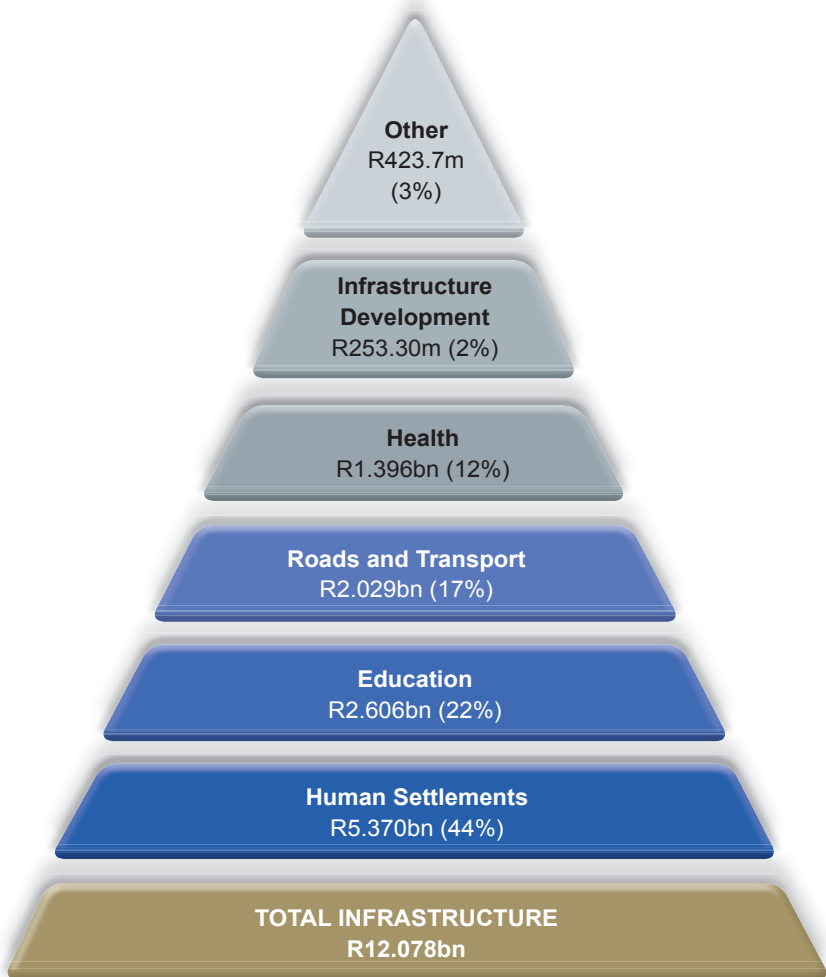
Personnel Spending



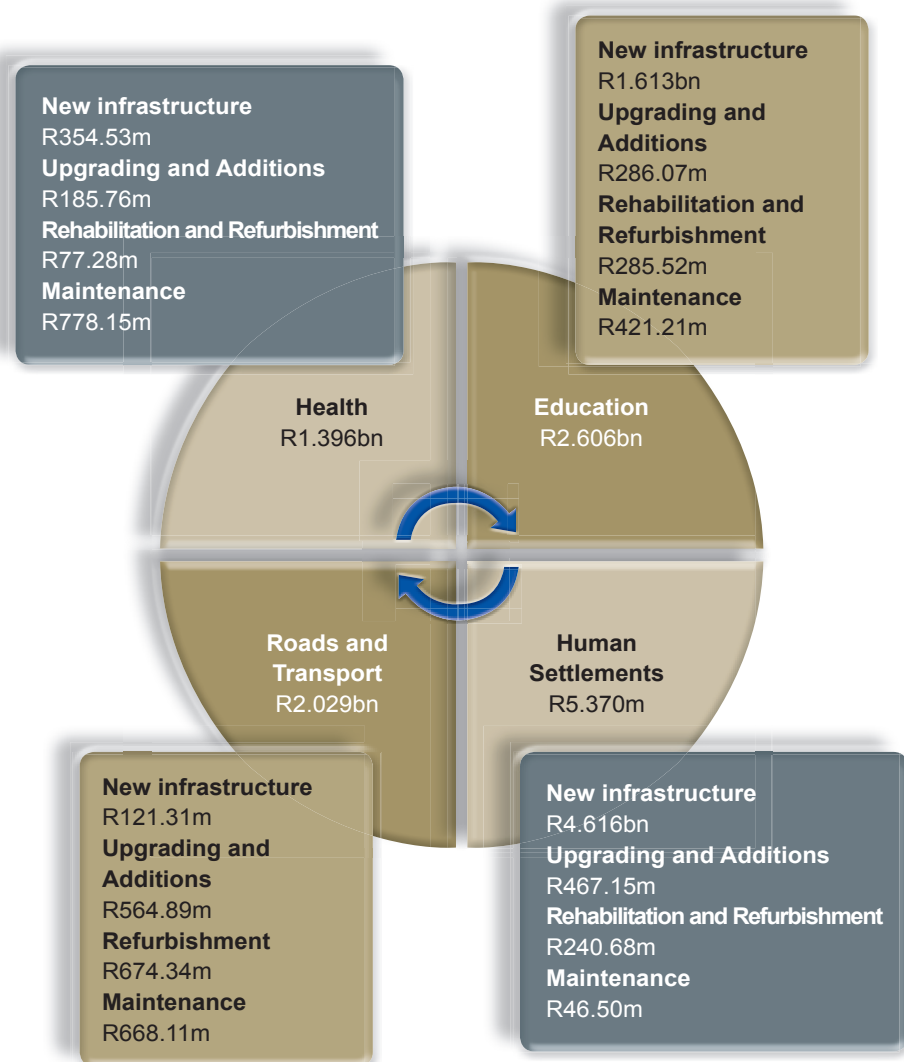
Social Services



Infrastructure Spending



Infrastructure Spending cont.



Key projects and initiatives for 2015/16

- Service Delivery War Room – R2.3m
- Township Economy Revitalisation – R140m
- Secondary School Intervention Programme (SSIP) - R704m
- Schools and classrooms of the Future - R1.6bn
- Smart schools – R20m
- HIV/AIDS programme - R3.1bn
- Gauteng Broadband Network - R250m
- Savannah City – R102m
- Syferfontein – R274m
- Tshepo 500 000 – R55m
- Women's Monument – R90m

Where have we increased our spending?

DEPARTMENT	ADJUSTMENT APPROPRIATION 2014/15	MAIN APPROPRIATION 2015/16	% CHANGE 2014/15 -2015/16
Education	33 212 863	36 043 909	8.52%
Health	31 491 179	34 175 179	8.52%
Social Development	3 434 362	3 963 972	15.42%
Human Settlements	5 114 755	5 939 014	16.12%
Roads and Transport	6 034 499	6 605 952	9.57%
Infrastructure Development	1 885 628	2 050 698	8.75%
Other	6 034 499	6 611 950	9.57%
Total provincial payments and estimates	87 206 702	95 390 674	9.38%
Social	68 138 404	74 183 060	8.87%
Non Social	19 068 298	21 207 614	11.22%
Total Appropriation	87 206 702	95 390 674	9.38%